

Double-ended T8 led tube install specification

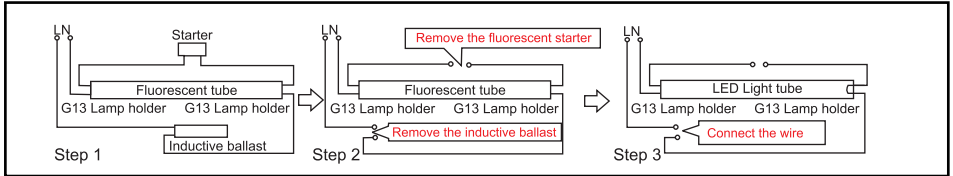
1 - To Replace The Old Fluorescent Lamp



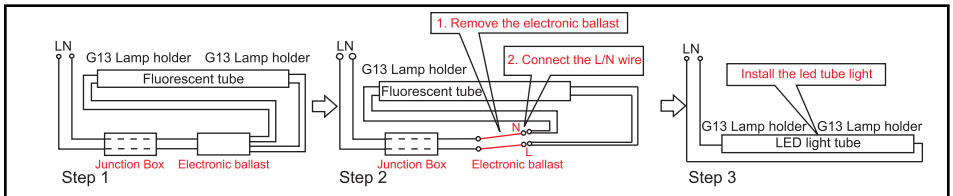
Warning

Remove the ballast or starter before installation
Refer to below circuit for installation

Replace The Old Fluorescent Lamp with Inductive Ballast



Replace The Old Fluorescent Lamp with Electronic Ballast



2 - For Direct Installation

